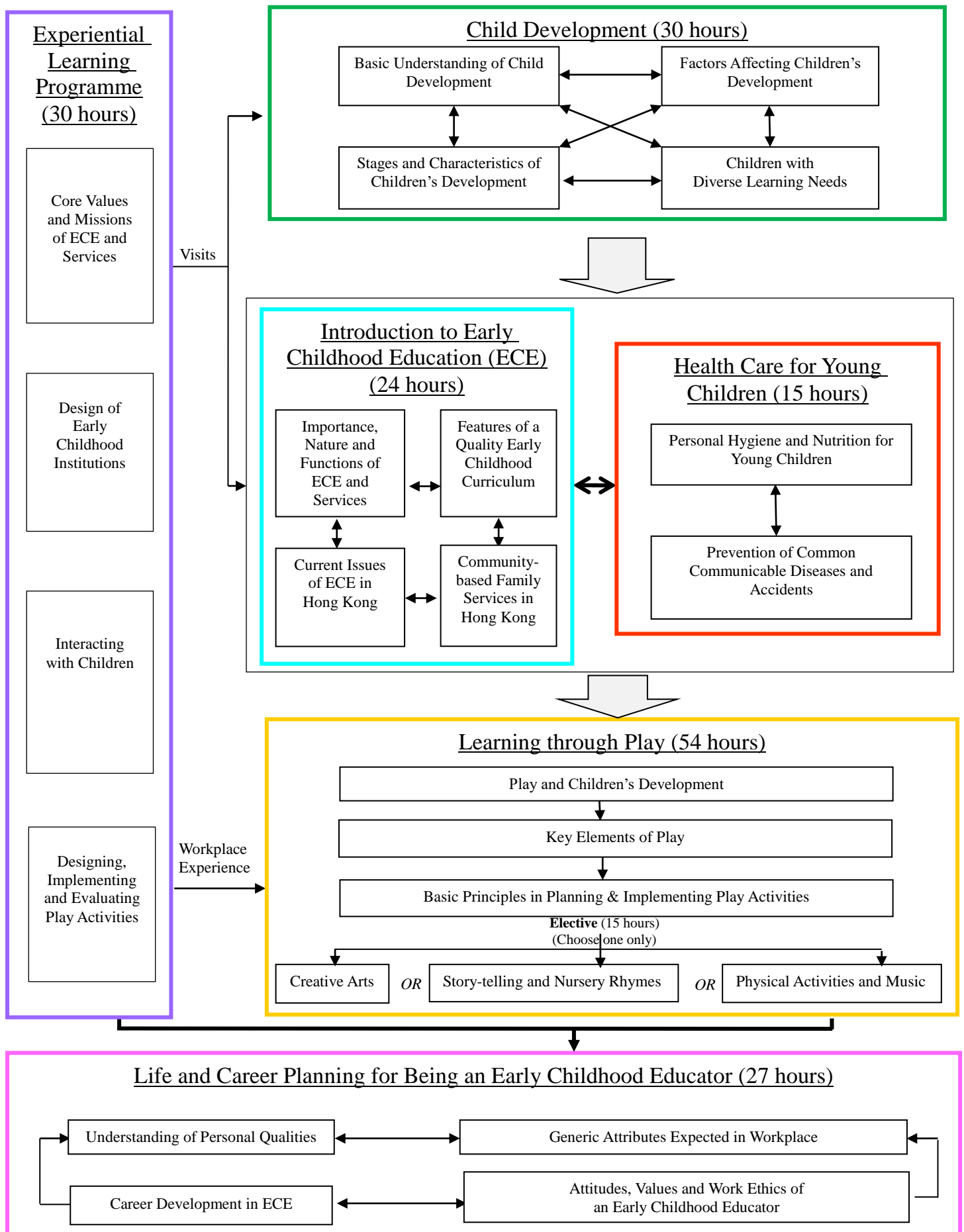


Applied Learning

2022-24 Cohort; 2024 HKDSE

Item	Description
1. Course Title	Child Care and Education
2. Course Provider	Vocational Training Council
3. Area of Studies/ Course Cluster	Services/Personal and Community Services
4. Medium of Instruction	Chinese (supplemented with English Terminology) or English
5. Learning Outcomes	<p>Upon completion of the course, students should be able to:</p> <ol style="list-style-type: none"> (1) identify the developmental characteristics of children in early childhood; (2) identify the key issues of early childhood education in Hong Kong; (3) apply the basic health and care concepts in local early childhood education settings; (4) design, implement and evaluate play activities for children according to children's interests and abilities; (5) demonstrate appropriate communication and collaborative skills when interacting with children, early childhood educators, and team members; (6) demonstrate a basic understanding of work ethics in early childhood education and one's mission and competencies required; and (7) develop self-understanding for further studies and career development in the related field.

6. Curriculum Map – Organisation and Structure



7. The Context

- The information on possible study and career pathways is provided to enhance students' understanding of the wider context of the specific Applied Learning course. Students who have successfully completed Applied Learning courses have to meet other entry requirements as specified by the institutions.
- The recognition of Applied Learning courses for admission to further studies and career opportunities is at the discretion of relevant institutions. The Education Bureau and the course providers of Applied Learning are exploring and seeking recognition related to further education and career development opportunities for students successfully completing the Applied Learning courses.

